

THE BOREAL TRAIL

Meadow Lake Provincial Park



Located within Meadow Lake Provincial Park, and spanning 135 kilometers through the backcountry wilderness

of the boreal forest, the **Boreal Trail** is Saskatchewan's destination for outdoor enthusiasts and adventure seekers.

The Boreal Trail takes adventurers through the heart of the boreal forest where they can experience lush forest, crystal clear lakes and a variety of wildlife. Explore the trail on foot, bike or experience parts of it from the water. The memories you create on this challenging and remote trail will keep you coming back.

Trail Rules

All Hikers Must Check IN/OUT Call 1-306-236-7680

Please leave a message if calling outside office hours.

1. Stay on Trail: Stepping off the trail can cause damage to small plants and hidden animal homes.
2. Be Prepared: Bring along a backpack with water, a snack and other equipment in case of an emergency.
3. Leave No Trace: Do not leave anything behind. The trail should look as though you were never there.
4. Be respectful to wildlife: This is their home, not ours. If you encounter wildlife on the trail be sure to keep your distance and give them space.
5. Leave it alone if you don't know what it is: There are some plants, berries and mushrooms in the forest that are poisonous and should be avoided.
6. Don't touch baby animals: Animal Mothers will often hide their young in the bush or tall grass. It's mother will come back for it.
7. Be considerate of other trail users.

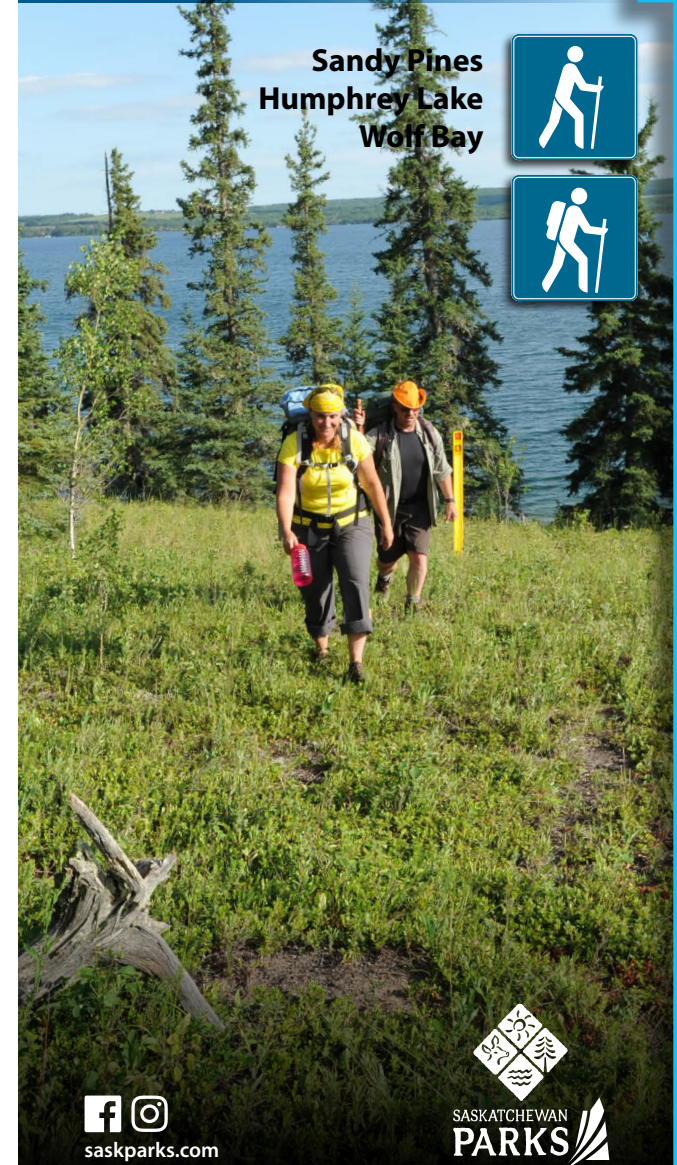


SNAP-IT & TAG-IT!
#SaskParks

Meadow Lake Provincial Park

Hiking Trails

Sandy Pines
Humphrey Lake
Wolf Bay

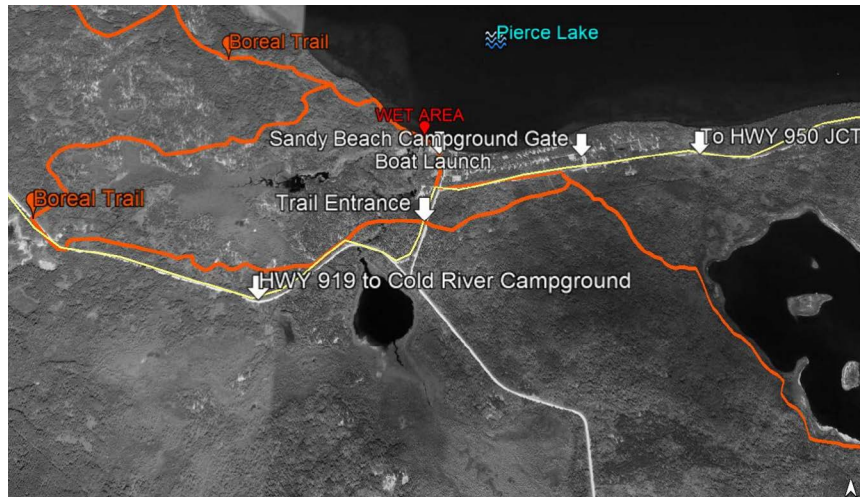


 
saskparks.com


SASKATCHEWAN
PARKS

Sandy Pines Hiking Trail

- 5.2 km



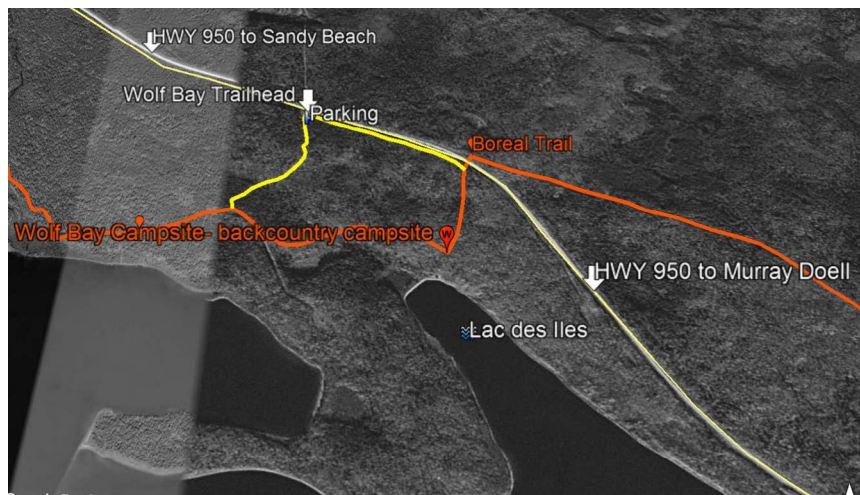
Humphrey Lake Hiking Trail

- 3 km to Tower



Wolf Bay Hiking Trail

- 3 km



Park Contact Information

Meadow Lake Provincial Park
 Box 70 Dorintosh, SK S0M 0T0
 Phone: 306-236-7680 or 306-236-7617
 Email: MeadowLake@gov.sk.ca

Camping/Park Information

www.saskparks.com



Emergency Contact Information

Park Watch (24HR): 1-800-667-1788
 Report Wildfires: 1-800-667-9660
 RCMP (Police)/Ambulance/Fire: 911
 TIP (Turn in Poachers/Polluters): 1-800-667-7561

Once emergency services are notified,
 then advise park office of situation.

Please Remember:

- Respect our parks – leave them as you find them.
- Be aware and stay back from wildlife.
- No lifeguards on beaches. Guardians assume responsibility of children's safety at all times.
- 🐾 Pets are welcome, but not in public structures. Keep on leash at all times.
- It is an offence to remove firewood from our parks.

